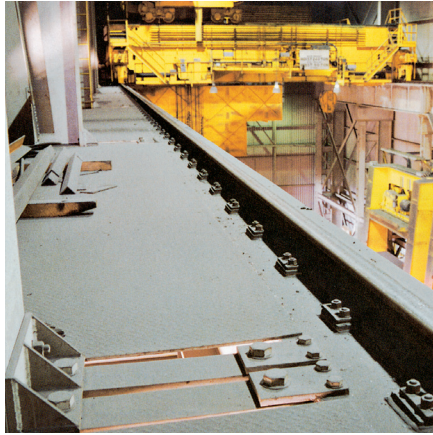


Standard American Profiles*

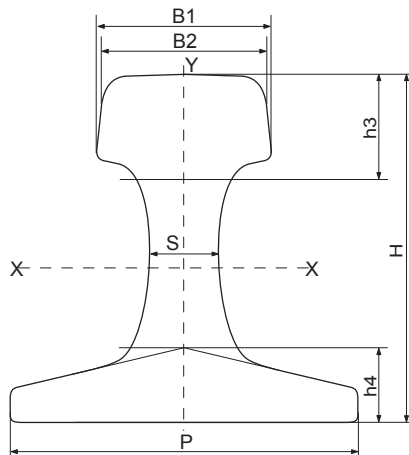


Crane Rails under American Standards (CR 104 through CR 175) are rolled based on the technical specifications ASTM A759-2000 and are offered in either Standard Grade (Control Cooled) or Head Hardened.**

The standard length of these rails is 39'. Gantrex can supply 60' and 78' lengths as well, depending on customers requirements.

The ASTM A759-2000 specification is applied only to type CR crane rails with a nominal mass of 104 lb/yd (51.6 kg/meter) to 175 lb/yd (86.8 kg/meter)

**NOTE: Although not covered by the ASTM Standard, some sections are also available in High Carbon steel.



Designation

	Weight		B1		B2		S		P		H		h3	h4
	lbs/yd	kg/m	in	mm	in	mm	in	mm	in	mm	in	mm	in	in
CR104	104.0	51.59	2 1/2	63.5	2 1/2	63.5	1	25.4	5	127.0	5	127.0	1 1/2	1 1/16
CR105	105.0	52.09	2 9/16	65.1	2 9/16	65.1	15/16	23.8	5 3/16	131.8	5 3/16	131.8	1 25/32	1
CR135	135.0	66.97	3 7/16	87.3	3	76.2	1 1/4	31.7	5 3/16	131.8	5 3/4	146.0	1 7/8	1 1/16
CR171	171.0	84.83	4.3	109.2	4	101.6	1 1/4	31.7	6	152.4	6	152.4	2	1 1/4
CR175	175.0	86.80	4 1/4	107.9	4 1/32	102.4	1 1/2	38.1	6	152.4	6	152.4	1 3/4	1 9/64

Consult Gantrex for rail clip and pad selection.

Chemical Composition (%)

C	Mn	Elements P (max)	S (max)	Si (max)
0.67 - 0.84	0.70 - 1.10	0.040	0.0450	0.10 - 0.50

Mechanical Properties

Grade	Brinell Hardness	Tensile strength (approximate)
standard	typical min. 260*	min. 127 ksi
head hardened	min. 321 - max. 388	min. 157 ksi

* ASTM A759/200 does not indicate a minimum Brinell hardness.