

### AVAILABLE FEATURES

- Pre-assembled with rail clip lower components welded in our shop
- Located holes for boltable rail clips
- Located holes for adhesive anchor bolts for quick template drilling
- Pre-drilled and tapped for leveling bolts for easy vertical alignment
- Pre-coated to desired specification (e.g. bare metal, primed or hot dip galvanized)
- Standard or custom designed to suit all rail sizes and types
- Custom designed for expansion joint locations

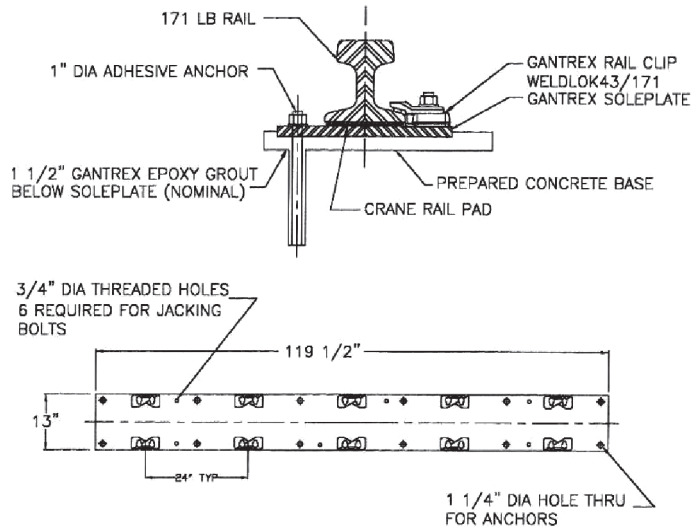
### DESCRIPTION

GANTREX Continuous Steel Soleplates are designed to provide optimum support for rail on concrete systems. Used as base plates for the support of runway rails for equipment such as gantry cranes, ship-to-shore container cranes, stacker-reclaimers, transfer cars and AS/RS systems, soleplates are an important element of rail support systems. Gantrex has also manufactured continuous soleplates for projects such as retractable roof stadiums, coke battery equipment and radar antenna positioning systems.

Usually made from A36 steel, continuous soleplates can range in thickness from ½ inch to over 2 inches. Standard lengths are nominally 10', with allowance for space in between for thermal expansion. Gantrex can assist you with design details of soleplates based on application parameters such as duty cycle, rail size, wheel load, available space and environmental conditions. And we can combine the products from our extensive offering of rail system components to provide you with a complete runway solution.

## CONTINUOUS SOLEPLATE

Continuous soleplates are fabricated in our ISO 9001:2008 certified shop. From raw data to finished manufacturing, Gantrex soleplates are in service for practically every type of application found in heavy industrial plants. Backed by our fully-staffed engineering and design department, we can provide detailed drawings for problem-free construction.



Through our affiliated company, Gantrex Crane Rail Installations, Inc., we can assist you in the field with technical support, supervision or complete installation. Contact Gantrex to learn more about how we can help.



Contact Gantrex for a copy of the article,  
"Effective Methods for Mounting Crane Rail Systems on Concrete Foundations"



TOLL FREE: 800 2 GANTREX (800) 242-6873

Web site: [www.gantrex.com](http://www.gantrex.com) • Email: [sales@gantrex.com](mailto:sales@gantrex.com)



© GANTREX, 2008  
PRINTED in U.S.A.

Rev. 10/11