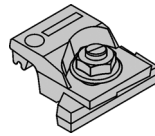
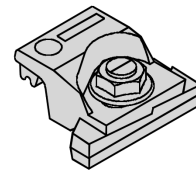


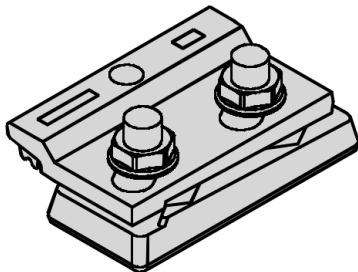
22/200



21/020

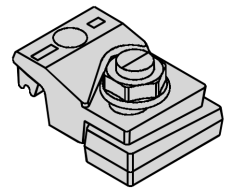


21/050

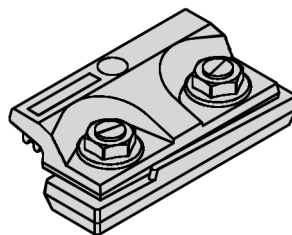


22/195

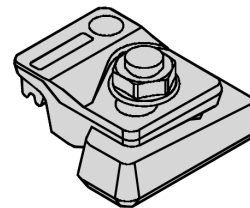
WELDABLE CLIPS RANGE



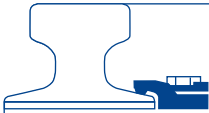
21/080



22/130



21/125



PATENTED WELDABLE CLIPS

General characteristics

Clips consist of an assembly of 2 main components, each with relative displacement.
Clips are fastened by welding the lower part to the support.

Upper part provided with a vulcanize-bonded nose in synthetic elastomer, applying a downwards force on the rail foot.

Interaction of the upper part on the lower one and fitted with 1 or 2 bolt(s) and special nut(s).

All components are made from high grade materials (500-600 N/mm²).

Technical advantages

Total rail side adjustment range, during and after mounting, from 8 to 20 mm, according to the clip type.
Interaction by double wedge system allowing a lateral self-locking fastening under side loads from 20 up to 200 kN, according to the clip type.

Elastomer vulcanize-bonded nose on the upper part allows :

- ◆ accomodation of rail and girder tolerances;
- ◆ suppression of fatigue effects on bolts;
- ◆ elimination of bolts loosening;
- ◆ the control of axial movement of a broken rail;
- ◆ a pre-compression of the underlying pad.

Vulcanization on the metallic part guarantees a nose adhesion throughout adverse conditions.
Reduces noise and vibrations.
No maintenance.

Mounting

For clip mounting procedures, please refer to the appropriate data sheets that are supplied on delivery of the material.

Tightening must be done by means of an adequately calibrated torque wrench. The use of an impact wrench is prohibited.

For more detailed information, please contact us.

Corrosion protection

As standard, bolts and nuts and washers are hot dip galvanized 50/70 microns.

As an alternative : the upper part can also be hot dip galvanized 70 microns.

As lower part is welded, it is always black (possibility of further protection after welding).

When required, the only acceptable protective coating between upper and lower parts of clips, should be restricted to a primer coat, with a maximum thickness 40 microns.

In case of further painting protection, the use of solvent is prohibited.

Available standard clips

21/020 – 21/050 – 21/080 – 21/125 – 22/130 – 22/195 – 22/200.

Special clips are available or can be developed for particular applications, please contact us.

We reserve the right to discontinue or change specifications or design at any time without prior notice and without incurring any obligation whatsoever.



GANTREX S.A.

rue du Commerce 19 • 1400 Nivelles • Belgium

Tel. : +32(0)67.88.80.30 • Fax : +32(0)67.21.63.21 • E-mail : info@be.gantry.com

<http://www.gantry.com>