

## The soft and adjustable solution

The GANTREX® patented clips are part, together with the GANTREX® pads, of the soft rail fixing system.

Designed as stress resistant, their mechanical performances have been certified by demanding and highly specified tests carried out by the Evaluation Laboratory for Rail Tracks Construction in München (Germany).



Sea-lock Zeebrugge (B) - Boltable clips



HIT (Hong Kong) - Weldable clips

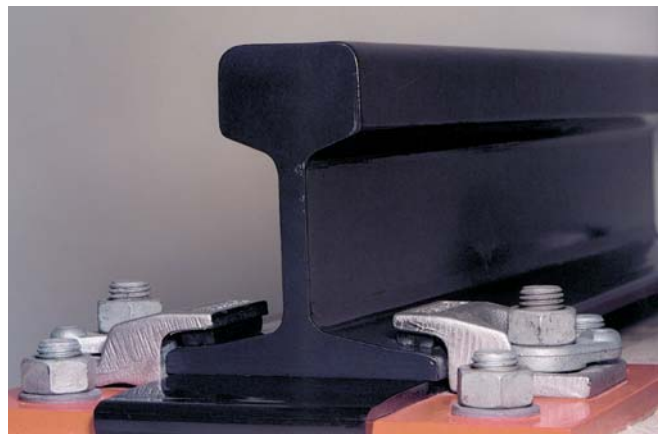


Nuclear Power Station Tricastin (F) - Weldable clips

### Principle

The clips maintain the rail in its position by means of a mechanical lock and simultaneously accept the real rail movements through a soft synthetic elastomer nose, vulcanize-bonded to the clips.

Moreover, their lateral adjustment makes the installation easy and allows possible corrections to the track geometry throughout its life.



Boltable clips



Boltable clips



Landside port Eberswalde (D) – Boltable clips



Sollac Dunkerque (F) - Weldable clips

### An universal system

The extensive GANTREX® clips range can accommodate more than 100 different rail profiles produced around the world.

Two main clip types are available, determined by the fixing support : either welded or bolted. This choice depends on technical conditions and local requirements.



Weldable clips



Dubai Drydocks (UAE) – Weldable clips

We reserve the right to discontinue or change specifications or design at any time without prior notice and without incurring any obligation whatsoever.



**GANTREX** S.A.

rue du Commerce 19 • 1400 Nivelles • Belgium

Tel. : +32(0)67.88.80.30 • Fax : +32(0)67.21.63.21 • E-mail : info@be.gantry.com

<http://www.gantry.com>