

Description

High performance quick curing anchoring system.

Application

Quick anchoring of sole plates supporting rails on concrete floors and beams.
Curing temperature between 5°C and 30°C. Effective in continuously damp conditions.
Suitable for threaded rods.

Technical characteristics

Yield : 1 capsule per hole.

Curing times

Temperature	Curing time	
	Dry concrete	Wet concrete
> 20°C	1 h	2 h
11-20°C	2 h	4 h
< 10°C	> 5 h	> 10 h

Holes depths and diameters

Rod thread size	Holes diameters
M16	18 mm
M20	25 mm
M24	28 mm

Depth and tightening torque determined by calculation.

Mechanical characteristics

Calculation details on request.

Packing

Size of glass capsule according to size of anchor.

Store life

12 months, in dry and cool store (between 5°C and 25°C).

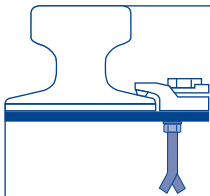
Tooling

Adapter for boring hammer (on request).

Tools cleaning

Acetone.

ON REVERSE : Instructions for use ►



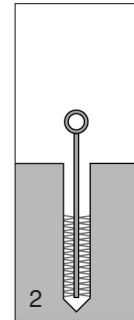
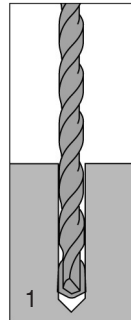
CHEMICAL ANCHORING GLASS CAPSULE GANTREX® CHEMICAL V60



Instructions for use

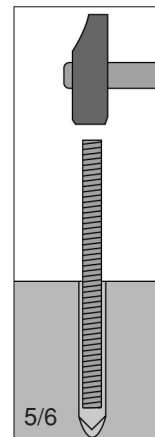
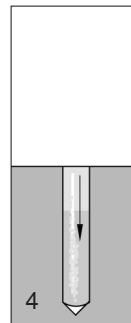
Support preparation

1. Drill the hole at the required depth and diameter.
2. Clean the surface of the hole by means of a cylindrical brush (3 strokes).
3. Blow all debris out of the hole with compressed air or with a hand pump (3 strokes).



Capsules preparation

4. Insert one capsule per hole. Care must be taken to insert the capsule with the arrow pointing to the bottom of the hole.



Anchors installation

5. Insert anchor in the hole.
6. Hammer the anchor through the capsule using a manual or mechanical hammer.
7. Observe the curing time.

Notes

On site, avoid exposing the capsules to direct sun.
Curing must be done avoiding bad weather.
Not suitable for anchoring into vertical walls or in ceilings.

Health and safety

Harmful when inhaled.
Irritating to eyes and skin.
Can induce irritation when in direct contact with skin.
Wear gloves and suitable eye or face protection.
Use only in well ventilated areas.
Do not inhale vapours.

We reserve the right to discontinue or change specifications or design at any time without prior notice and without incurring any obligation whatsoever.



GANTREX^{S.A.}

rue du Commerce 19 • 1400 Nivelles • Belgium
Tel. : +32(0)67.88.80.30 • Fax : +32(0)67.21.63.21 • E-mail : info@be.gantry.com
<http://www.gantry.com>