

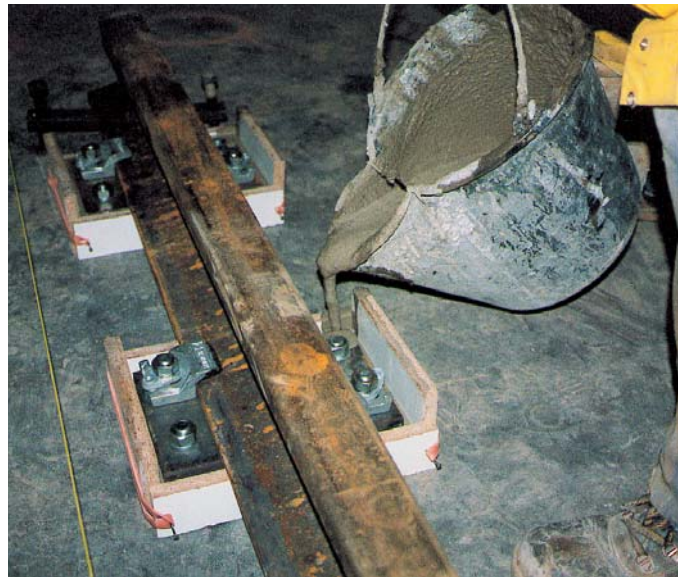
The solution for a reliable track support

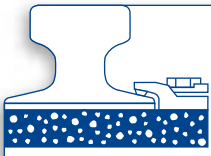
GANTREX is your ideal partner for the supply of rail track support and fixing products.

GANTREX can supply a wide range of non-shrinking grouts, as well as synthetic resin, suitable for new tracks or repair works.

On the basis of technical information, together with stress calculations, **GANTREX's** Technical Department selects the appropriate product for fixing rail track supports (sole plates and chairs) on concrete. On the same basis, **GANTREX** also selects the appropriate products for securing holding down bolts.

The products supplied by **GANTREX** are specially recommended for highly stressed applications where heavy loads and vibrations are present.





GROUT RESIN



They are particularly suitable for :

- machine foundations and structural castings, as well as crane rails, bridge floors, ...
- casting of prefabricated concrete elements.

They conform to the following criteria :

- non-shrink, ensuring an adequate casting accuracy;
- high mechanical characteristics;
- very good flow characteristics;
- shock- and vibration- proof;
- short to very short curing time according to the application;
- resistant to water, oil and numerous chemical agents.

The selection of supplied GANTREX® products will be in accordance with your particular application. The quality of these products, implemented according to our recommendations will give the most efficient solution.

For more information, please consult us.
Technical specifications available on request.



We reserve the right to discontinue or change specifications or design at any time without prior notice and without incurring any obligation whatsoever.



GANTREX.S.A.

rue du Commerce 19 • 1400 Nivelles • Belgium
Tel. : +32(0)67.88.80.30 • Fax : +32(0)67.21.63.21 • E-mail : info@be.gantry.com
<http://www.gantry.com>