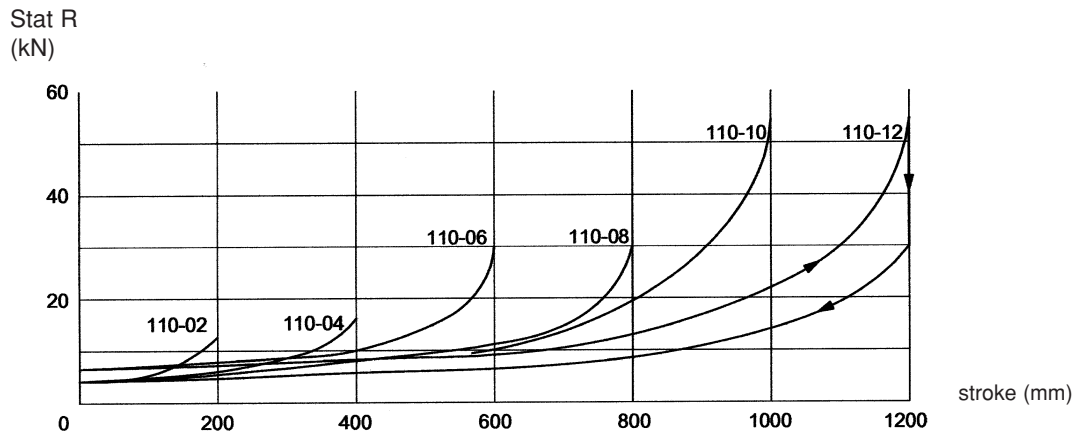


# HYDRAULIC BUFFER

## TYPES 110

### Static diagrams



### Characteristics

TYPES	Strokes mm	Dynamic capacities kJ	Max. impact forces kN		Static resistances kN
			codes F-D-T	code B	
110-02	200	53	350	225	from 3 to 12
110-03	300	78	350	200	from 3 to 12
110-04	400	105	350	200	from 3 to 12
110-05	500	112	300	---	from 4 to 31
110-06	600	135	300	---	from 4 to 31
110-07	700	131	250	---	from 4 to 31
110-08	800	150	250	---	from 4 to 31
110-10	1000	169	200	---	from 5 to 54
110-12	1200	180	180	---	from 5 to 54

#### PLUNGER ASSEMBLY

Standard protection, T° from -30°C to +100°C

Marine protection, T° from -30°C to +100°C

Special bronze protection, T° from -30°C to +100°C

#### Codes

**N**

**M**

**R**

#### HEAD AND BELLOWS ASSEMBLY

Standard : dia. 130 mm

Without head

Head 130 and bellows

#### Codes

**130**

**000**

**13N**

#### CYLINDER ASSEMBLY

Front mounted (built in)

Back mounted (not built in)

Back flange & front support

Front and rear support

#### Codes

**F**

**B**

**D**

**T**

#### STROKES

200 mm

300 mm

400 mm

500 mm

600 mm

#### Codes

**02**

**03**

**04**

**05**

**06**

700 mm

800 mm

1000 mm

1200 mm

#### Codes

**07**

**08**

**10**

**12**

#### METERING TUBE

Mass per buffer			
up to 5 T	<b>02*</b>	from 20 to 50 T	<b>07</b>
from 5 to 12,5 T	<b>04**</b>	from 40 to 100 T	<b>08</b>
from 10 to 25 T	<b>05</b>	from 80 to 200 T	<b>10</b>

\*For 110-02 only \*\* For 110-02, 110-03, 110-04 and 110-05 only  
For higher mass, please consult us.

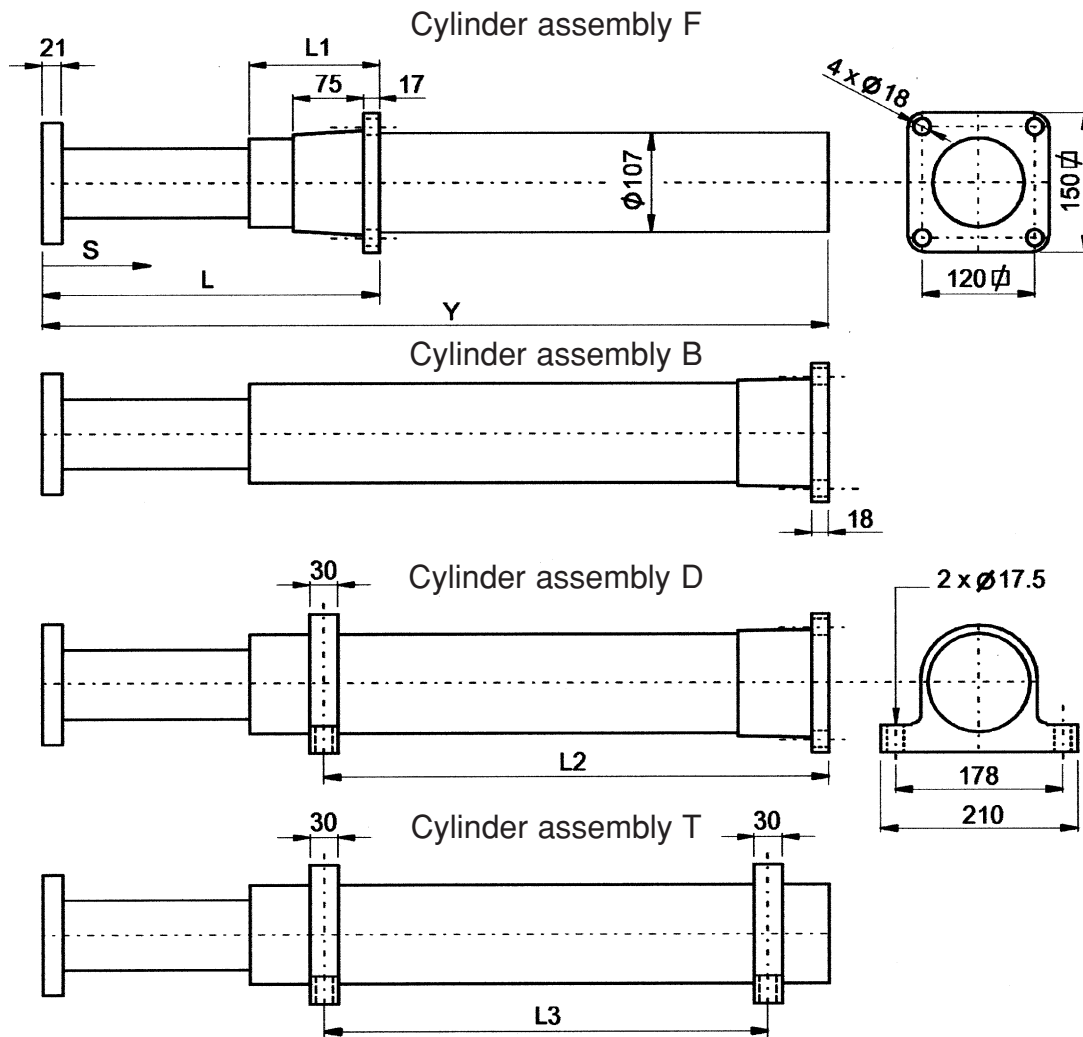
### Identification

Ex : assemblies head and metering  
type plunger cylinder bellows stroke tube  
**110 -N F -130 -02 -05**

# HYDRAULIC BUFFER

## TYPES 110

### Dimensions



TYPES	Strokes S	L	Y	L1	L2	L3	Weight*
	mm	mm	mm	mm	mm	mm	kg
110-02	200	360	839	139	539	474	28,7
110-03	300	578	1155	257	637	572	37,2
110-04	400	678	1469	257	851	786	46,2
110-05	500	778	1720	257	1002	938	52,3
110-06	600	878	1975	257	1157	1092	59,6
110-07	700	978	2270	257	1352	1288	66,7
110-08	800	1078	2564	257	1547	1482	76,4
110-10	1000	1278	3064	257	1846	1781	89,5
110-12	1200	1478	3635	257	2217	2152	105,4

\* (without flange)

We reserve the right to discontinue or change specifications or design at any time without prior notice and without incurring any obligation whatsoever.



**GANTREX** S.A.

rue du Commerce 19 • 1400 Nivelles • Belgium

Tel. : +32(0)67.88.80.30 • Fax : +32(0)67.21.63.21 • E-mail : info@be.gantry.com

http://www.gantry.com