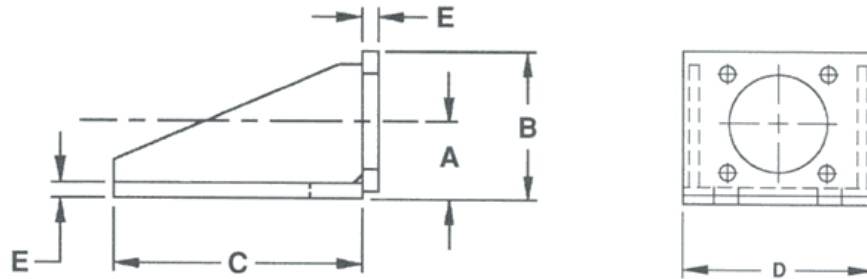


## STANDARD BRACKETS

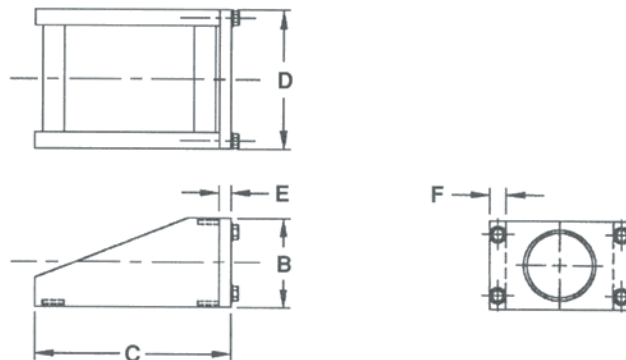
Gantrex hydraulic bumpers are extremely versatile with respect to mounting options. As shown in the individual bumper data sheets, standard mounting flanges for "Front" or "Rear" mounting are most typical. Bolt pattern and hole sizes are clearly shown in the drawings provided. Each standard mounting flange has an additional hole to allow safety wire to be looped back from the bumper to the crane or supporting structure. If these "standard" configurations do not suit your requirements, we are able to provide custom designed brackets or flanges upon request. These custom designs include bolttable and weldable styles.

## FOOT MOUNTING BRACKETS

The following charts show standard configurations of weldable foot mounting brackets. These designs can be easily modified to match your requirements.



<b>STANDARD PROFILE: For Front Mount Bumper (All dimensions in inches)</b>							
Bumper Type	Bracket Part No	"A"	"B"	"C"	"D"	"E"	Weight (lbs)
21-AFS	BB21-P	3 3/8"	6 7/16"	10"	9"	3/4"	35
4-AFZ	BB4-P	6"	11 1/2"	15"	14 1/2"	1"	125
52, 53, 54-AFZ	BB50-P	6"	11 1/2"	12"	14"	1"	60
9-AFZ	BB9-P	6"	11 1/2"	15"	14"	1"	60
76-AFZ	BB76-P	6"	11 1/2"	15"	14"	1"	60
15-AFO	BB15-P	6 1/2"	12 1/2"	15"	15"	1"	105

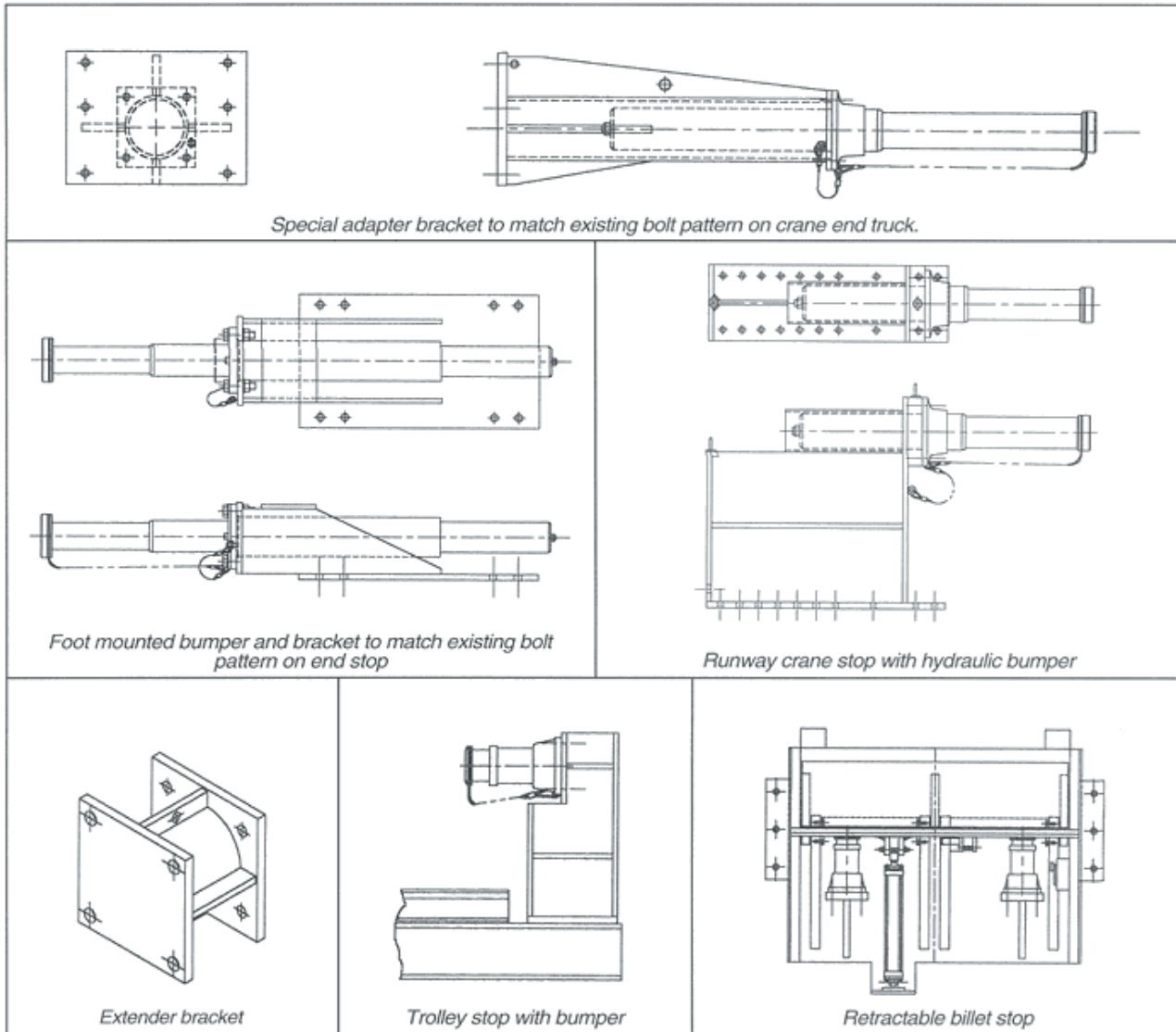


<b>LOW PROFILE: For Capsule Bumper (All dimensions in inches)</b>							
Bumper Type	Bracket Part No	"B"	"C"	"D"	"E"	"F"	Weight (lbs)
21-ACP	BB21-S	5"	10"	6 1/4"	1 1/4"	1"	25
4-ACP	BB4-S	7 1/4"	15"	8 3/4"	2 1/4"	1 1/4"	75
52, 53, 54-ACP	BB50-S	6 1/2"	12"	7 1/2"	1 1/2"	1"	65
9-ACP	BB9-S	7 1/4"	15"	8 3/4"	2"	1 1/4"	80
76-ACP	BB76-S	7 1/4"	15"	8 3/4"	2"	1 1/4"	80

## CUSTOM BUMPER MOUNTING BRACKETS

### SPECIAL DESIGNS

Custom brackets and fabrications are available to simplify mounting or retrofit of Gantrex hydraulic bumpers. The mounting bracket can be designed to maximize the useful portion of your crane runway while maintaining the required clearances around other cranes or end stops. The mounting plates can be designed to match existing bolt holes to make installation easy. "Bolt-in-place" replacements streamline bumper installation processes. We will provide an approval drawing and proposal for your evaluation. Contact GANTREX for assistance. Some sample designs are shown below:



GANTREX reserves the right to discontinue or change specifications at any time without prior notice and without incurring any obligation.



**TOLL FREE: 800 2 GANTREX (800) 242-6873**

Web site: [www.gantrex.com](http://www.gantrex.com) • Email: [sales@gantrex.com](mailto:sales@gantrex.com)

© GANTREX, 2008  
PRINTED in U.S.A.

Rev. 01/08