



A Member of the GANTRY GROUP

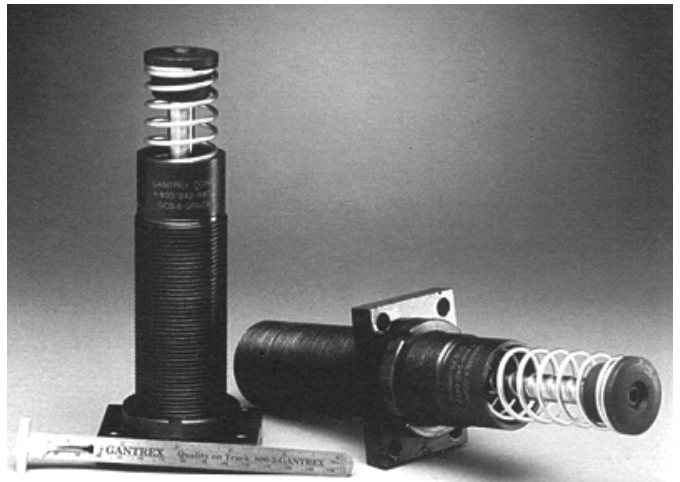
# Small Hydraulic Crane Bumpers

## Type GCB

Gantrex Type GCB small hydraulic crane bumpers have been designed and configured to provide reliable, uniform deceleration of moving equipment - at an affordable price. The units are built with a threaded body and can be arranged with rear or front mounting flange configurations. The compact size and flexible mounting possibilities create a truly adaptable energy absorber.

Gantrex GCB bumpers can be sized to meet CMAA, AIST, OSHA, DIN, FEM and many other standards for safety. All models are made entirely in North America for the highest quality and fastest delivery possible.

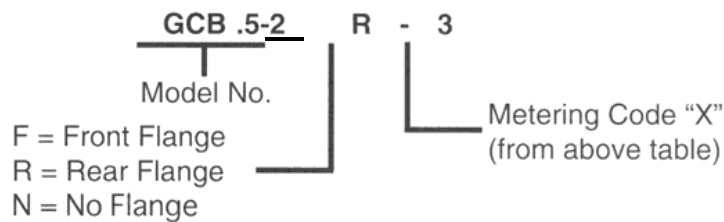
Efficient energy absorption is accomplished through a self-compensating metering tube design. The crane bumper will automatically adapt to variations in impacting weight and speeds within the effective ranges shown below. Contact GANTREX for application assistance.



MODEL NO	METERING CODE "X"	EFFECTIVE WEIGHT		KE CAPACITY ft-lb (J)	STROKE inches (mm)	RETURN FORCE lb (N)	SHIP WEIGHT lb (kg)
		lb	(kg)				
GCB.5-2	-1	100 - 400	(45 - 181)	500 (678)	2 (50)	15.1 - 32.2 (67 - 143)	3.6 (1.6)
	-2	340 - 1,360	(154 - 617)				
	-3	1,150 - 4,600	(522 - 2,087)				
	-4	3,900 - 15,600	(1,769 - 7,076)				
GCB.75-3	-1	150 - 600	(136 - 544)	750 (1,017)	3 (75)	11.7 - 40.3 (52 - 179)	4.1 (1.9)
	-2	510 - 2,040	(231 - 925)				
	-3	1,730 - 6,920	(785 - 3,139)				
	-4	5,850 - 23,400	(2,654 - 10,614)				
GCB1.25-2	-1	300 - 1,200	(136 - 544)	1,250 (1,695)	2 (50)	20.1 - 34.9 (89 - 155)	7.7 (3.5)
	-2	1,020 - 4,080	(463 - 1,851)				
	-3	3,460 - 13,840	(1,569 - 6,278)				
	-4	11,700 - 46,800	(5,307 - 21,228)				
GCB2.5-4	-1	600 - 2,400	(272 - 1,089)	2,500 (3,390)	4 (100)	23.5 - 61 (104 - 271)	9.5 (4.3)
	-2	2,040 - 8,160	(925 - 3,701)				
	-3	6,920 - 27,680	(3,139 - 12,556)				
	-4	23,400 - 93,600	(10,614 - 42,457)				

Temperature range: 10°F to 200°F (-12°C to 98°C)  
 Velocity range: 30 ft/min to 600 ft/min (.15 m/sec to 3.05 m/sec)  
 Maximum angular loading shall not exceed 3°.

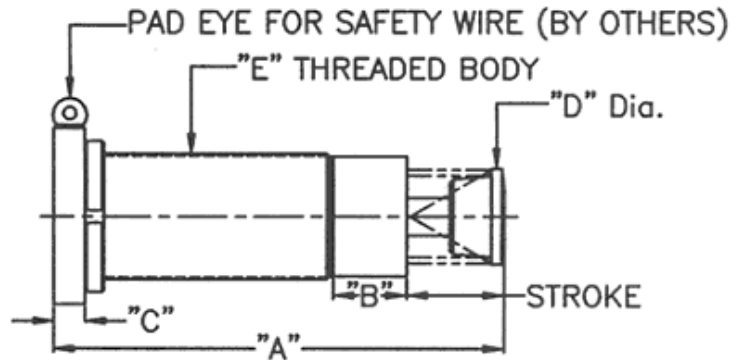
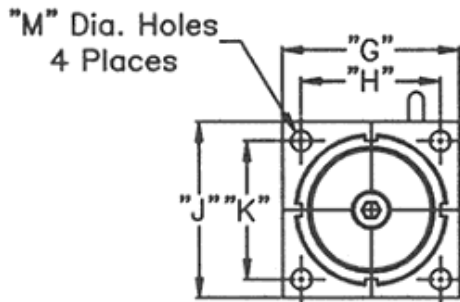
### HOW TO SPECIFY AND ORDER (Example):



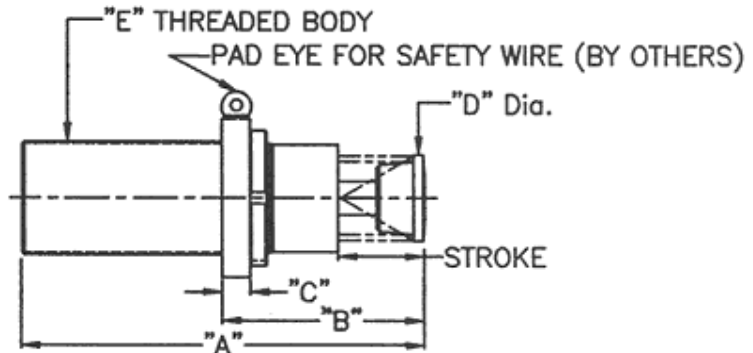
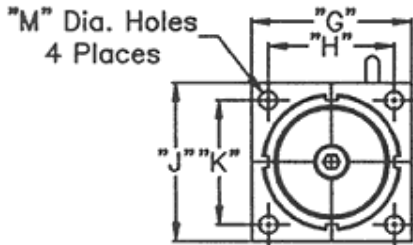
## GANTREX TYPE GCB SMALL HYDRAULIC CRANE BUMPERS

### DIMENSIONS:

All dimensions in inches (mm).



MODEL NO	STROKE	"A"	"B"	"C"	"D"	"E"	"G"	"H"	"J"	"K"	"M"	Bolt Dia.
<b>GCB.5-2R</b> Rear Flange	2 (50)	7.69 (195.3)	1.06 (26.9)	.50 (12.7)	1.38 (34.9)	1 3/4 - 12UN	3.00 (76.2)	2.38 (60.5)	2.25 (57.2)	1.62 (41.2)	.34 (8.7)	1/4 (M8)
<b>GCB.75-3R</b> Rear Flange	3 (75)	9.69 (246.1)	1.06 (26.9)	.50 (12.7)	1.38 (34.9)	1 3/4 - 12UN	3.00 (76.2)	2.38 (60.5)	2.25 (57.2)	1.62 (41.2)	.34 (8.7)	1/4 (M8)
<b>GCB1.25-2R</b> Rear Flange	2 (50)	8.85 (224.6)	1.44 (36.5)	.62 (15.9)	1.90 (48.3)	2 1/2 - 12UN	3.50 (88.9)	2.75 (69.6)	3.50 (88.9)	2.75 (69.6)	.41 (10.4)	3/8 (M10)
<b>GCB2.5-4R</b> Rear Flange	4 (100)	12.85 (326.4)	1.44 (36.5)	.62 (15.9)	1.90 (48.3)	2 1/2 - 12UN	3.50 (88.9)	2.75 (69.6)	3.50 (88.9)	2.75 (69.6)	.41 (10.4)	3/8 (M10)



MODEL NO	STROKE	"A"	"B"	"C"	"D"	"E"	"G"	"H"	"J"	"K"	"M"	Bolt Dia.
<b>GCB.5-2F</b> Front Flange	2 (50)	7.69 (195.3)	3.84 (97.5)	.50 (12.7)	1.38 (34.9)	1 3/4 - 12UN	3.00 (76.2)	2.38 (60.5)	2.25 (57.2)	1.62 (41.2)	.34 (8.7)	1/4 (M8)
<b>GCB.75-3F</b> Front Flange	3 (75)	9.69 (246.1)	4.84 (122.9)	.50 (12.7)	1.38 (34.9)	1 3/4 - 12UN	3.00 (76.2)	2.38 (60.5)	2.25 (57.2)	1.62 (41.2)	.34 (8.7)	1/4 (M8)
<b>GCB1.25-2F</b> Front Flange	2 (50)	8.85 (224.6)	4.34 (110.4)	.62 (15.9)	1.90 (48.3)	2 1/2 - 12UN	3.50 (88.9)	2.75 (69.6)	3.50 (88.9)	2.75 (69.6)	.41 (10.4)	3/8 (M10)
<b>GCB2.5-4F</b> Front Flange	4 (100)	12.85 (326.4)	6.34 (161.2)	.62 (15.9)	1.90 (48.3)	2 1/2 - 12UN	3.50 (88.9)	2.75 (69.6)	3.50 (88.9)	2.75 (69.6)	.41 (10.4)	3/8 (M10)

GANTREX reserves the right to discontinue or change specifications at any time without prior notice and without incurring any obligation.



**TOLL FREE: 800 2 GANTREX (800) 242-6873**

Web site: [www.gantrex.com](http://www.gantrex.com) • Email: [sales@gantrex.com](mailto:sales@gantrex.com)

© GANTREX, 2008  
PRINTED in U.S.A.

Rev. 9/09