

| SPECIFICATIONS  | TYPE OF 1" BOLT     |                     |                     | COMPONENTS  |
|---|---------------------|---------------------|---------------------|---|
|   | A307 or Welded Stud | A325                | A490                |   |
| • Resistance to lateral force R max*  | 8 kips              | 23 kips             | 31 kips             | <b>STELCAM 22</b><br>1 Clip Body 5120/16/38 made to accommodate 3/4", 7/8" and 1" hardware. |
| • Bolt torque   | 200 ft-lbs          | 200 ft-lbs (min.**) | 200 ft-lbs (min.**) |   |
| • Lateral adjustment, total   | 5/8"                |                     |                     | 1 Self-locking Cam, 5126/16 made to accommodate 1" hardware.                                |
| • "N" available noses   | 7/16", 5/8", 15/16" |                     |                     |   |
| • Weight  | 1.5 lbs             |                     |                     | Hex Lug of cam to be painted Blue. <b>Please confirm bolt diameter when ordering.</b>       |
| <b>NOTES</b>  |                     |                     |                     |   |
| See "Selection Table" for "F" Dimensions.<br>See "General Specifications Stelcam Series" for additional clip information. |                     |                     |                     |   |

\* R is calculated on the basis that the bolt threads are excluded from the shear plane.

\*\*Bolt torque shown is minimum required for clip performance. However, bolts can be torqued to higher value to meet applicable structural codes.

**GANTREX RAIL CLIP STELCAM® 22**

| SELECTION TABLE |         |                         |                       |                                   |                              |
|-----------------|---------|-------------------------|-----------------------|-----------------------------------|------------------------------|
| RAIL SIZE       | F (in)  | RAIL ONLY CLIP PART NO. | GANTREX PAD MODEL NO. | RAIL ON GANTREX PAD CLIP PART NO. | AT SPLICE BAR CLIP PART NO.  |
| 104 CR          | 5"      | Stelcam 22/104          | 130 RFS               | Stelcam 22/104P                   | Stelcam 22C<br>(4 per joint) |
| 105 CR          | 5 3/16" | Stelcam 22/105          | 130 RFS               | Stelcam 22/105P                   |                              |
| 135 CR          | 5 3/16" | Stelcam 22/135          | 130 RFS               | Stelcam 22/135P                   |                              |
| 171 CR          | 6"      | Stelcam 22/171          | 150 RFS               | Stelcam 22/171P                   |                              |
| 175 CR          | 6"      | Stelcam 22/175          | 150 RFS               | Stelcam 22/175P                   |                              |

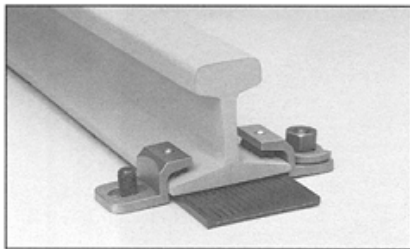
**NOTES**

- 1) To order clips without rubber noses consult GANTREX for proper selection.
- 2) GANTREX clips are available to suit most rail sections. Please consult GANTREX for details if your rail does not appear in the above table.
- 3) GANTREX recommends that rail joints be welded wherever possible.
- 4) Contact GANTREX for available protective coatings.

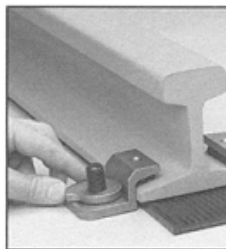
**MATERIALS**

Self-locking Cam . . . . . Ductile Cast Iron  
 Clip Body . . . . . Ductile Cast Iron  
 Pressure Block (Nose) . . . . . Synthetic Rubber

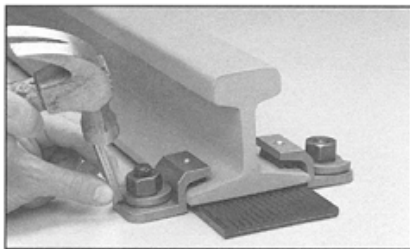
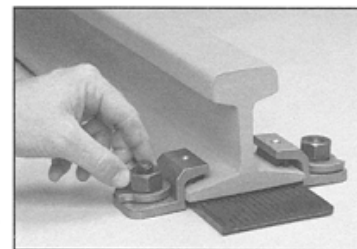
**INSTALLATION**



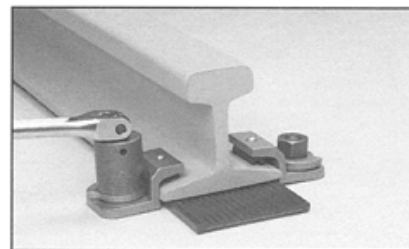
1. Position clip on bolt or stud.



2. Position self-locking cam. Install and lightly tighten nut.



3. Adjust self-locking cam to ensure tight contact between the rail and clip.



4. Tighten nut to required torque.

- Install clips in opposing pairs. (never stagger)
- Do not use cleaning fluids or protective coatings which contain ketones or similar chemicals, as they may seriously damage the rubber nose.

For complete crane runway installation services including rail welding, please contact:  
 GANTREX CRANE RAIL INSTALLATIONS at 1-800-242-6873

GANTREX reserves the right to discontinue or change specifications at any time without prior notice and without incurring any obligation whatsoever.



**TOLL FREE: 800 2 GANTREX (800) 242-6873**

Web site: [www.gantrex.com](http://www.gantrex.com) • Email: [sales@gantrex.com](mailto:sales@gantrex.com)

© GANTREX, 2008  
 PRINTED in U.S.A.

Rev. 07/11