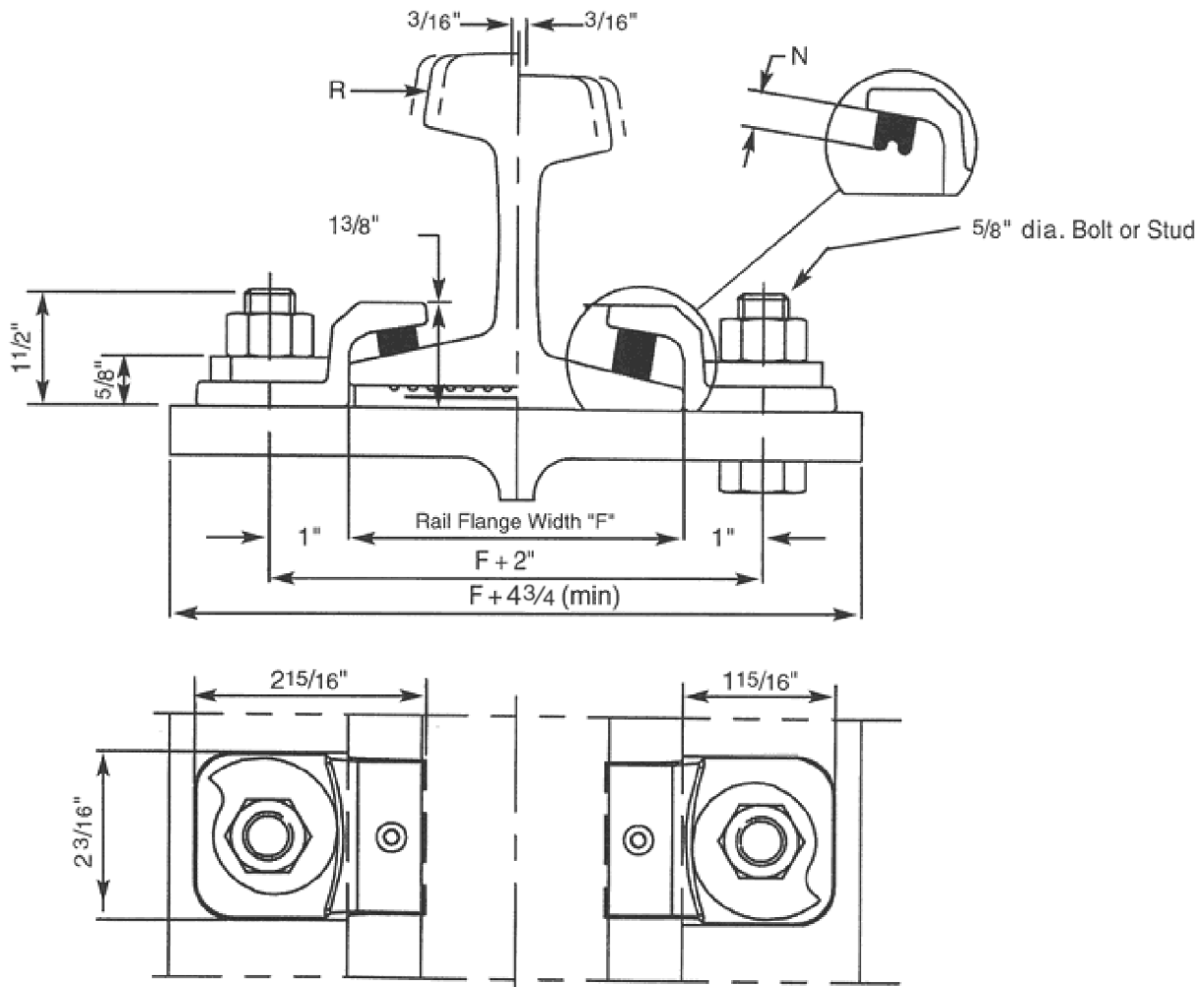


ASSEMBLY WITH PAD

ASSEMBLY WITHOUT PAD



SPECIFICATIONS		TYPE OF 5/8" BOLT			COMPONENTS
<ul style="list-style-type: none"> • Resistance to lateral force R max* • Bolt torque • Lateral adjustment, total • "N" available noses • Weight 		A307 or Welded Stud	A325	A490	STELCAM 9 1 Clip 5116\10\34 1 Self locking Cam 5116\10
		3 kips	9 kips	12 kips	
		70 ft-lbs	100 ft-lbs	120 ft-lbs	
		3/8"			
		1/2", 3/4"			
		0.7 lbs			
NOTES					
See "Selection Table" for "F" Dimensions.					
See "General Specifications Stelcam Series" for additional clip information.					

* R is calculated on the basis that the bolt threads are excluded from the shear plane.

SELECTION TABLE					
RAIL SIZE	F (in)	RAIL ONLY CLIP PART NO.	GANTREX PAD MODEL NO.	RAIL ON GANTREX PAD CLIP PART NO.	AT SPLICE BAR CLIP PART NO.
30 ASCE	3 1/8"	Stelcam 9/30	77 RFS	Stelcam 9/30 P	Stelcam 9C (4 per joint)
40 ASCE	3 1/2"	Stelcam 9/40	85 RFS	Stelcam 9/40P	
60 ASCE	4 1/4"	Stelcam 9/60	105 RFS	Stelcam 9/60P	

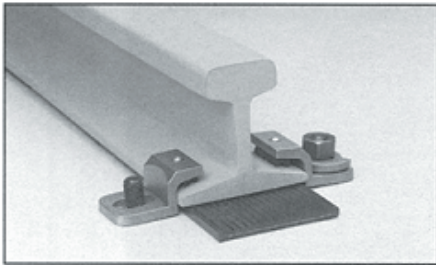
NOTES

- 1) To order clips without rubber noses consult GANTREX for proper selection.
- 2) GANTREX clips are available to suit most rail sections. Please consult GANTREX for details if your rail does not appear in the above table.
- 3) GANTREX recommends that rail joints be welded wherever possible.
- 4) Contact GANTREX for available protective coatings.

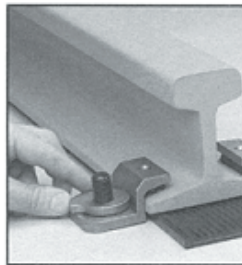
MATERIALS

- Self-locking Cam Ductile Cast Iron
- Clip Body Ductile Cast Iron, Austempered
- Pressure Block (Nose) Synthetic Rubber

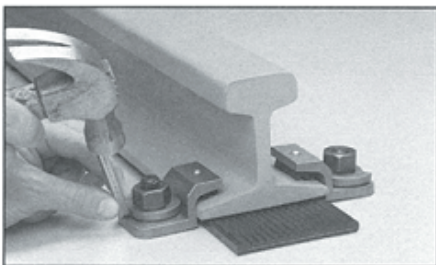
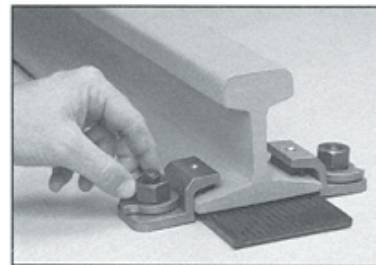
INSTALLATION



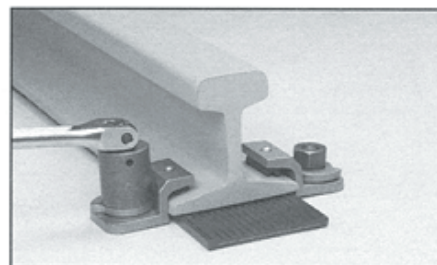
1. Position clip on bolt or stud.



2. Position self-locking cam. Install and lightly tighten nut.



3. Adjust self-locking cam to ensure tight contact between the rail and clip.



4. Tighten nut to required torque.

- Install clips in opposing pairs. (never stagger)
- Do not use cleaning fluids or protective coatings which contain ketones or similar chemicals, as they may seriously damage the rubber nose.

For complete crane runway installation services including rail welding, please contact:
GANTREX CRANE RAIL INSTALLATIONS at 1-800-242-6873

GANTREX reserves the right to discontinue or change specifications at any time without prior notice and without incurring any obligation whatsoever.



TOLL FREE: 800 2 GANTREX (800) 242-6873

Web site: www.gantrex.com • Email: sales@gantrex.com

© GANTREX, 2008
 PRINTED in U.S.A.

Rev. 07/11