

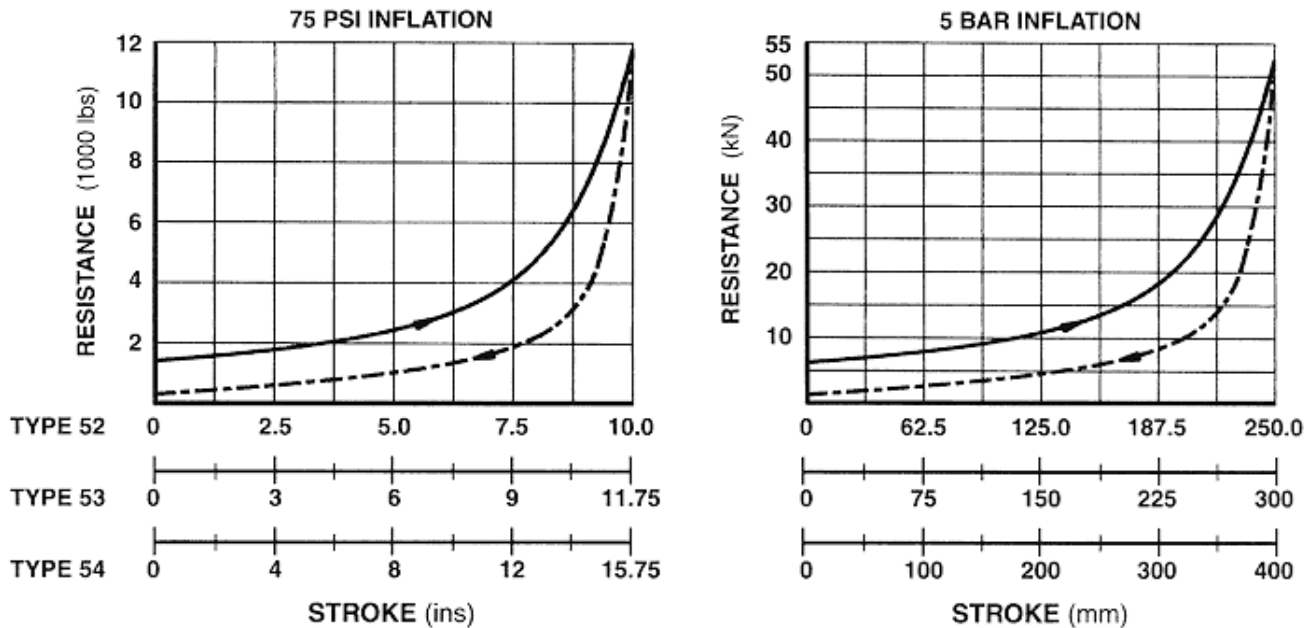
Type 50 Series Bumpers

PERFORMANCE CHARACTERISTICS:

	TYPE 52		TYPE 53		TYPE 54	
STROKE	(10 ins)	250 mm	(11 3/4 ins)	300 mm	(15 3/4 ins)	400 mm
ENERGY CAPACITY	(78,400 ft-lb)	106 kJ	(94,000 ft-lb)	128 kJ	(117,500 ft-lb)	160 kJ

STATIC RESISTANCE:

The graphs below show the static resistance at a **slow closure speed**, not at impact speed. Consult Gantrex if a reduced static resistance is required.

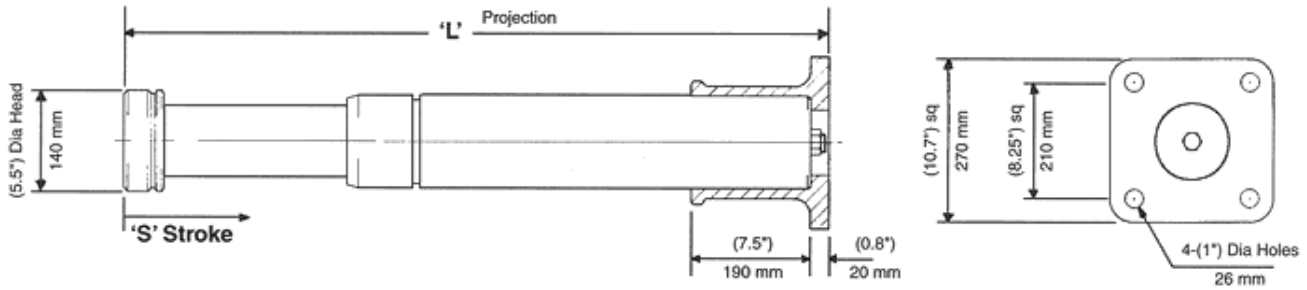


METERING PIN SELECTION:

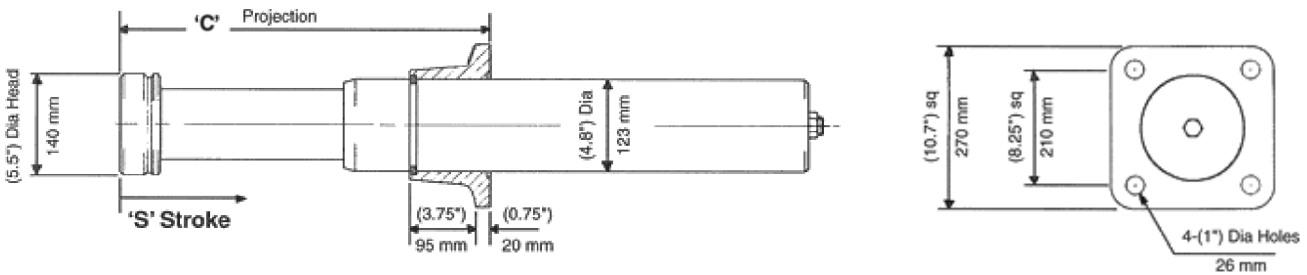
USE "We" AS DETERMINED IN BUMPER SELECTION CALCULATIONS

IMPACT WEIGHT (We)		METERING PIN CODES*			
(1000 lbs)	Metric Tonnes	TYPE 52	TYPE 53	TYPE 54	
UP TO 22	10	204	304	404	
" " 44	20	205	305	405	
" " 88	40	207	307	407	
" " 176	80	208	308	408	
" " 330	150	210	310	410	
" " 662	300	212	312	412	
" " 1323	600	215	315	415	
" " 2205	1000	219	319	419	
" " 4410	2000	222	322	422	

MOUNTING BRACKET SELECTION:



REAR MOUNTING	'L'		'S' STROKE		WEIGHT	
52ABZ140-*	(34.3 ins)	870.5 mm	(10 ins)	250 mm	(130 lbs)	59 kg
53ABZ140-*	(39.6 ins)	1005 mm	(11 3/4 ins)	300 mm	(139 lbs)	63 kg
54ABZ140-*	(50.2 ins)	1275.5 mm	(15 3/4 ins)	400 mm	(159 lbs)	72 kg



FRONT MOUNTING	'C'		'S' STROKE		WEIGHT	
52AFZ140-*	(20.8 ins)	528 mm	(10 ins)	250 mm	(121 lbs)	55 kg
53AFZ140-*	(22.7 ins)	577 mm	(11 3/4 ins)	300 mm	(130 lbs)	59 kg
54AFZ140-*	(26.6 ins)	677 mm	(15 3/4 ins)	400 mm	(150 lbs)	68 kg

* Indicates Metering Pin Code (See over - Metering Pin Selection Table)

EXTERNAL FINISH:

PLUNGER IS MARINE PLATED. ALL OTHER SURFACES HAVE RED OXIDE PRIMER READY FOR FINISH COAT OF PAINT.

SAFETY CABLE:

REQUIRED TO MEET AIST AND OSHA CODES. SPECIFY BY REPLACING FIRST LETTER "A" IN MODEL CODE WITH "S" E.G. 52**S**FZ140-212.

PROTECTIVE BELLOWS:

SPECIFY USING SUFFIX "B" E.G. 52AFZ140-212**B**.

HIGH TEMPERATURE SEALS:

USE WHERE AMBIENT TEMPERATURE IS HIGHER THAN 140°F. SPECIFY USING SUFFIX "H" E.G. 52AFZ140-212**H**.

LOW DRIVE DOWN FORCE:

REDUCED PRE-CHARGED PRESSURE TO ALLOW FULL COMPRESSION UNDER DRIVE MOTORS. CONSULT GANTREX FOR ASSISTANCE. SPECIFY USING SUFFIX "L" E.G. 52AFZ140-212**L**.

MOUNTING BRACKETS:

AVAILABLE IN STANDARD, LOW AND VERY LOW FOOT MOUNTING BRACKETS. CRANE STOPS AND EXTENDER BRACKETS ARE ALSO AVAILABLE. CONSULT GANTREX FOR PROPOSAL DRAWING.