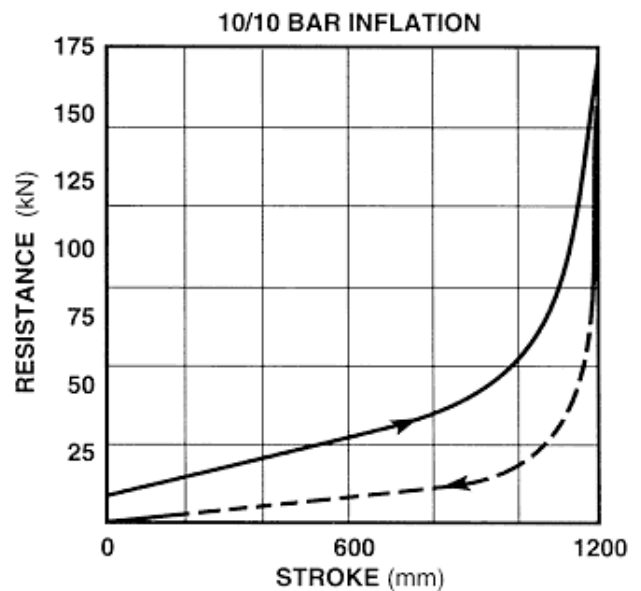
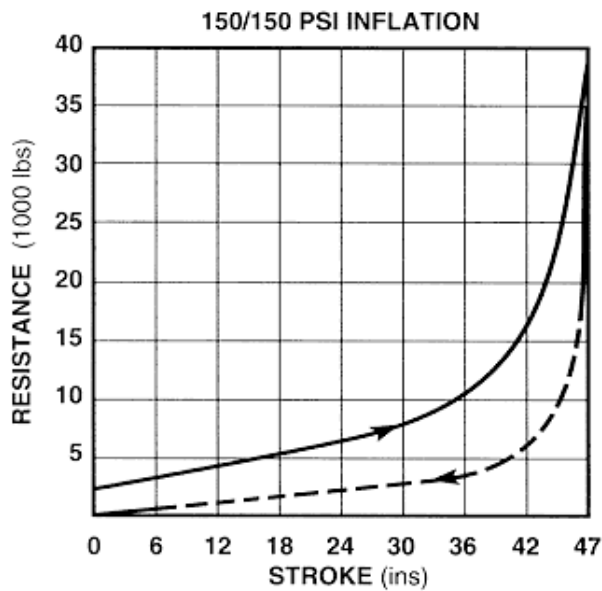


PERFORMANCE CHARACTERISTICS:

STROKE (47 ins) 1200 mm
ENERGY CAPACITY (526,600 ft lbs) 714 kJ

STATIC RESISTANCE:

The graphs below show the static resistance at a **slow closure speed**, not at impact speed. Consult Gantrex if a reduced static resistance is required.

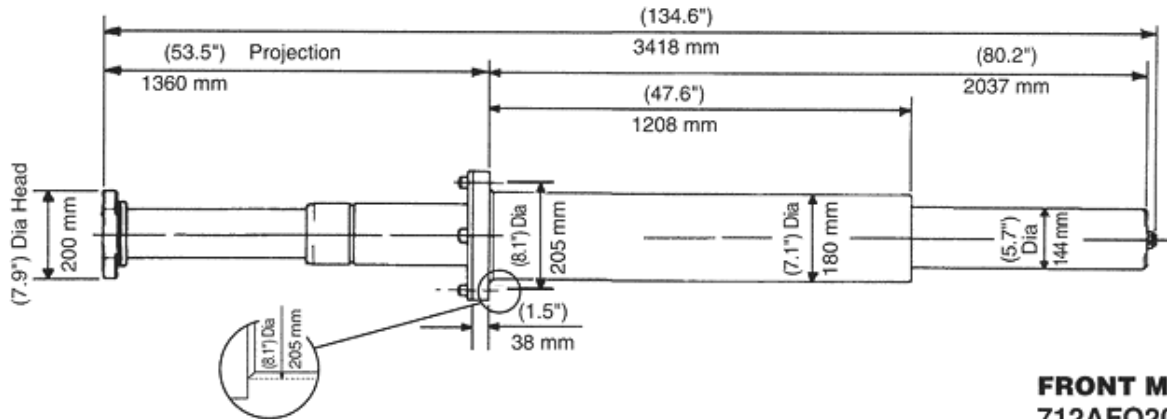


METERING PIN SELECTION:

USE "We" AS DETERMINED IN BUMPER SELECTION CALCULATIONS

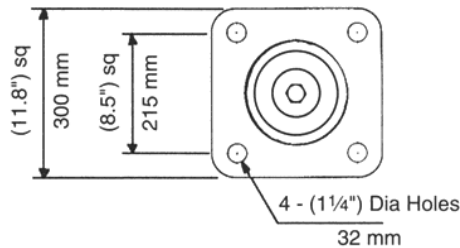
IMPACT WEIGHT (We)			METERING PIN CODE*
(1000 lbs)		Metric Tonnes	
UP TO	22	10	05
" "	44	20	07
" "	88	40	08
" "	165	75	10
" "	330	150	12
" "	662	300	15
" "	882	400	17
" "	1103	500	19
" "	2205	1000	22

MOUNTING BRACKET SELECTION:



FRONT MOUNTING
712AFO200-*
WT: (540 LBS)
246 KG

MOUNTING BRACKET BOLT PATTERN:



* Indicates Metering Pin Code
 (See over - Metering Pin Selection Table)

EXTERNAL FINISH:

PLUNGER IS MARINE PLATED. ALL OTHER SURFACES HAVE RED OXIDE PRIMER READY FOR FINISH COAT OF PAINT.

SAFETY CABLE:

REQUIRED TO MEET AIST AND OSHA CODES. SPECIFY BY REPLACING FIRST LETTER "A" IN MODEL CODE WITH "S" E.G. 712SFO200-15.

PROTECTIVE BELLOWS:

SPECIFY USING SUFFIX "B" E.G. 712AFO200-15B.

HIGH TEMPERATURE SEALS:

USE WHERE AMBIENT TEMPERATURE IS HIGHER THAN 140°F. SPECIFY USING SUFFIX "H" E.G. 712AFO200-15H.

LOW DRIVE DOWN FORCE:

REDUCED PRE-CHARGED PRESSURE TO ALLOW FULL COMPRESSION UNDER DRIVE MOTORS. CONSULT GANTREX FOR ASSISTANCE. SPECIFY USING SUFFIX "L" E.G. 712AFO200-15L.

MOUNTING BRACKETS:

AVAILABLE IN STANDARD, LOW AND VERY LOW FOOT MOUNTING BRACKETS. CRANE STOPS AND EXTENDER BRACKETS ARE ALSO AVAILABLE. CONSULT GANTREX FOR PROPOSAL DRAWING.