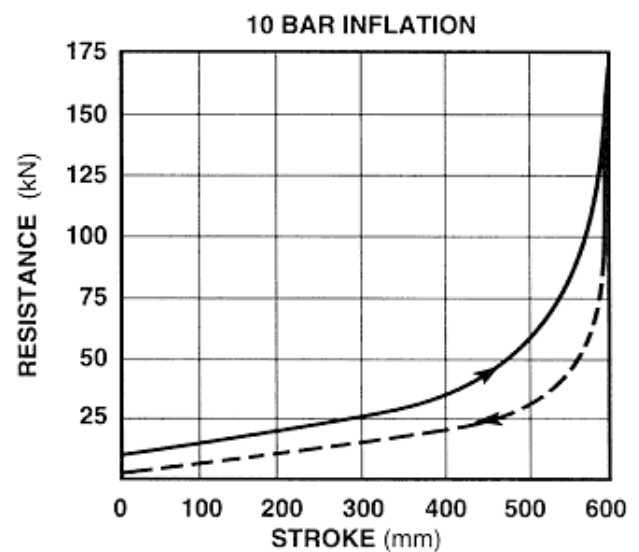
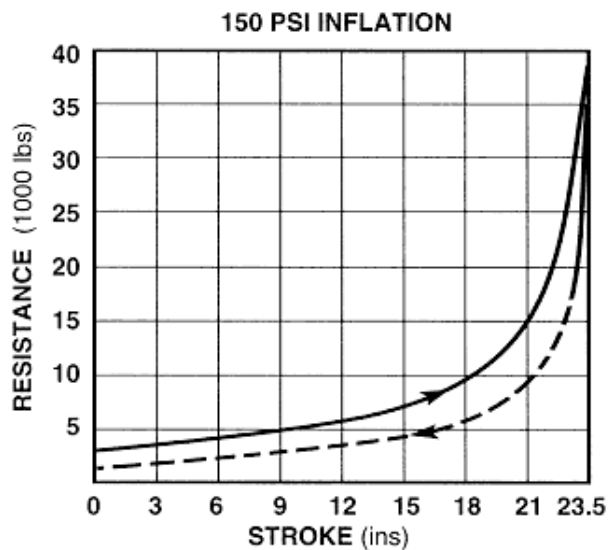


PERFORMANCE CHARACTERISTICS:

STROKE (23 1/2 ins) 600 mm
ENERGY CAPACITY (263,300 ft lbs) 357 kJ

STATIC RESISTANCE:

The graphs below show the static resistance at a **slow closure speed**, not at impact speed. Consult Gantrex if a reduced static resistance is required.



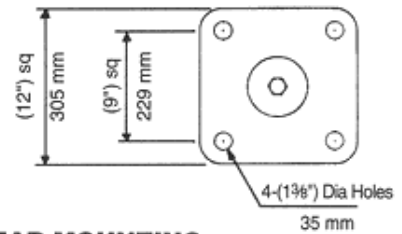
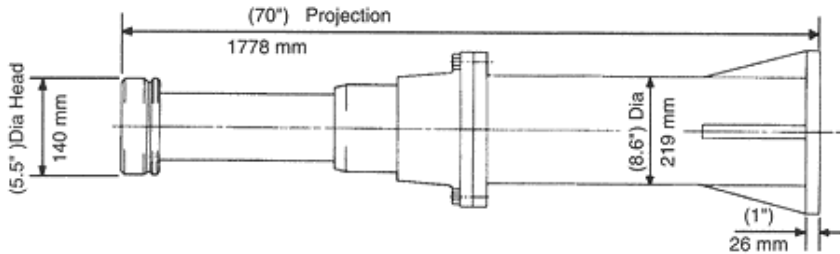
METERING PIN SELECTION:

USE "We" AS DETERMINED IN BUMPER SELECTION CALCULATIONS

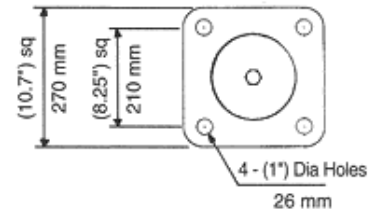
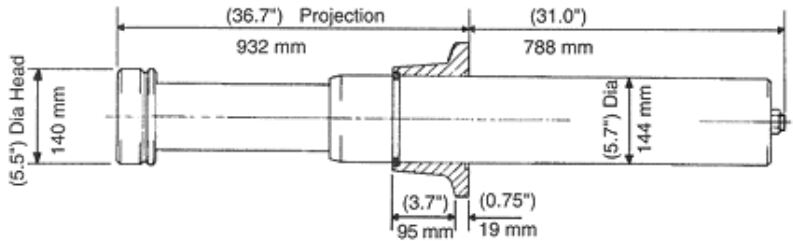
IMPACT WEIGHT (We)		Metric Tonnes	METERING PIN CODE*
UP TO	(1000 lbs)		
UP TO	22	10	604
" "	44	20	605
" "	88	40	607
" "	176	80	608
" "	330	150	610
" "	662	300	612
" "	1323	600	615
" "	1764	800	617
" "	2205	1000	619
" "	4410	2000	622

MOUNTING BRACKET SELECTION:

MOUNTING BRACKET BOLT PATTERNS:



REAR MOUNTING
76ABR140-*
WT: (362 LBS)
164 KG



FRONT MOUNTING
76AFZ140-*
WT: (212 LBS)
96 KG

* Indicates Metering Pin Code (See over - Metering Pin Selection Table)

- EXTERNAL FINISH:** PLUNGER IS MARINE PLATED. ALL OTHER SURFACES HAVE RED OXIDE PRIMER READY FOR FINISH COAT OF PAINT.
- SAFETY CABLE:** REQUIRED TO MEET AIST AND OSHA CODES. SPECIFY BY REPLACING FIRST LETTER "A" IN MODEL CODE WITH "S" E.G. 76SFZ140-612.
- PROTECTIVE BELLOWS:** SPECIFY USING SUFFIX "B" E.G. 76AFZ140-612B.
- HIGH TEMPERATURE SEALS:** USE WHERE AMBIENT TEMPERATURE IS HIGHER THAN 140°F. SPECIFY USING SUFFIX "H" E.G. 76AFZ140-612H.
- LOW DRIVE DOWN FORCE:** REDUCED PRE-CHARGED PRESSURE TO ALLOW FULL COMPRESSION UNDER DRIVE MOTORS. CONSULT GANTREX FOR ASSISTANCE. SPECIFY USING SUFFIX "L" E.G. 76AFZ140-612L.
- MOUNTING BRACKETS:** AVAILABLE IN STANDARD, LOW AND VERY LOW FOOT MOUNTING BRACKETS. CRANE STOPS AND EXTENDER BRACKETS ARE ALSO AVAILABLE. CONSULT GANTREX FOR PROPOSAL DRAWING.